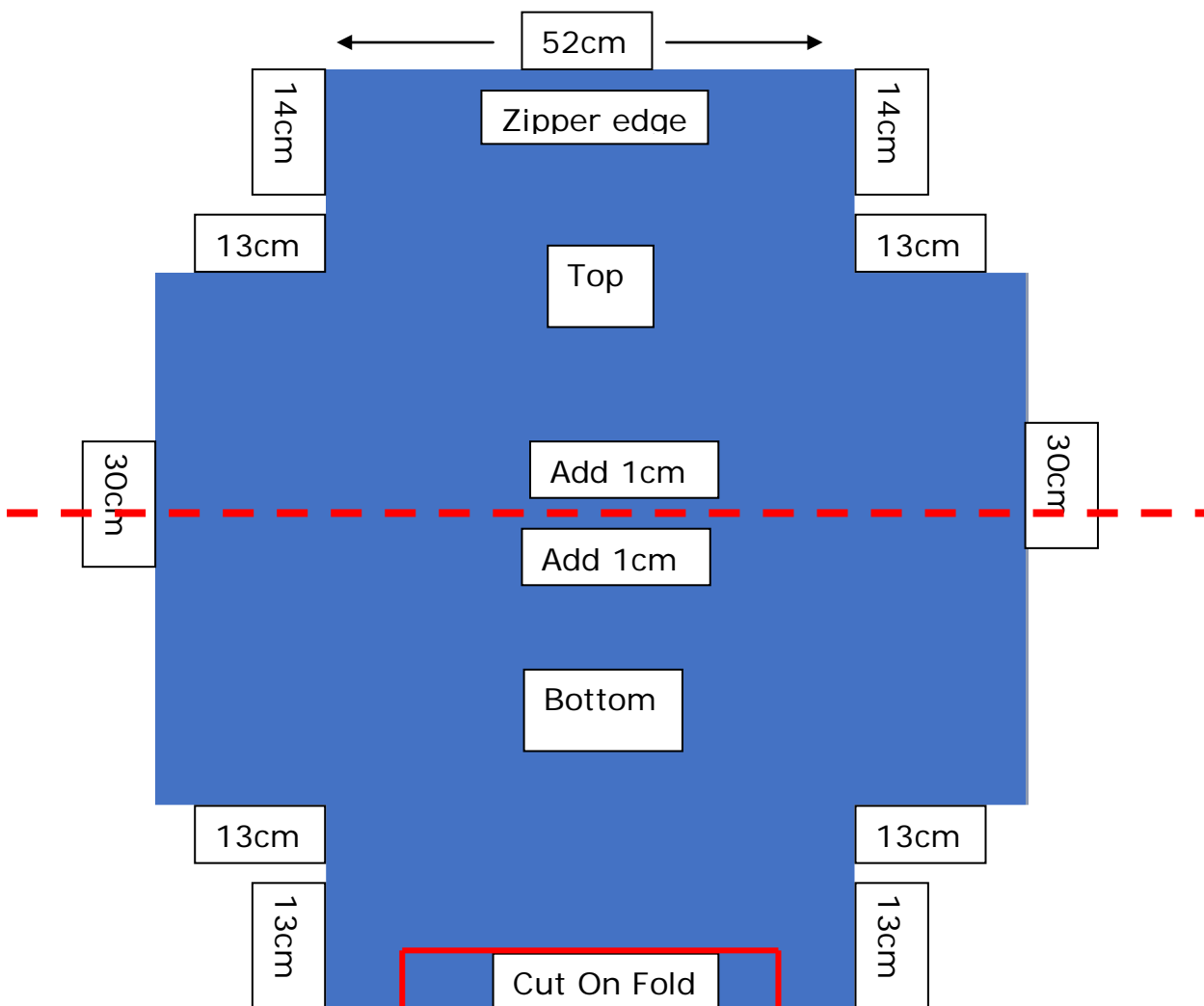


# Duffle bag pattern:

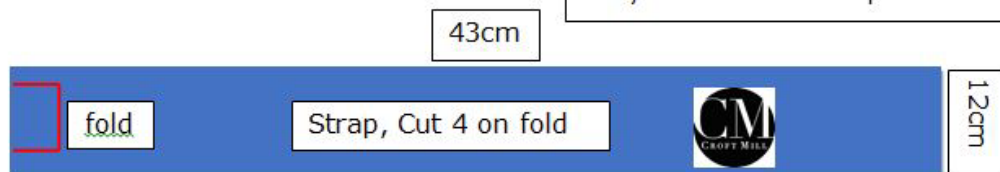
Cut one main fabric piece on a fold.

Cut one main lining piece on a fold.

For contrast main fabric bag i.e. top one colour, bottom another. Cut on the dotted line which is halfway and add 1cm to that edge on both pieces. Cut the bottom piece on a fold, cut two top pieces.



Total strap length when opened 86cm X 12cm and you should have four pieces.



# Duffle Bag Pocket and Tabs

