

# Sew This Pillow Case With Inner Flap

 [learn-to-sew.co.uk/pillow-case-with-inner-flap/](http://learn-to-sew.co.uk/pillow-case-with-inner-flap/)

April 6, 2018



An ideal project for beginners, straight stitch only...

**Quick and easy:** 2 X Pillow slips with turn over flap. Finished size approx 70cm X 50cm

## Materials needed:

Tape measure,

Sewing machine: straight stitch only

Pins,

Scissors,

Matching Thread,

Iron and Ironing board,

1.5m X 114cm main colour poly/cotton fabric.

50cm X 114cm contrast colour poly/cotton fabric.

A left over piece of fabric for the \*optional contrast fabric.

*There is no download as you just have to measure and cut, all pieces of fabric are straight pieces.*

---

## To Cut:

---

Open the 1.5m fabric and fold length ways so you have a fold on one side and the selvage edges together on the other side.

Iron nice and flat and cut along the fold. You should now have; 2 pieces of fabric 150cm X 57cm in the main colour.

Cut 2 pieces of fabric 34cm X 57cm in a contrast colour.

(\* optional )Cut 2 strips of fabric 6cm X 57cm in another contrast for the strip. I have used lace to decorate slips but be careful as it should not be rough for sleeping on.

## Instructions:

---

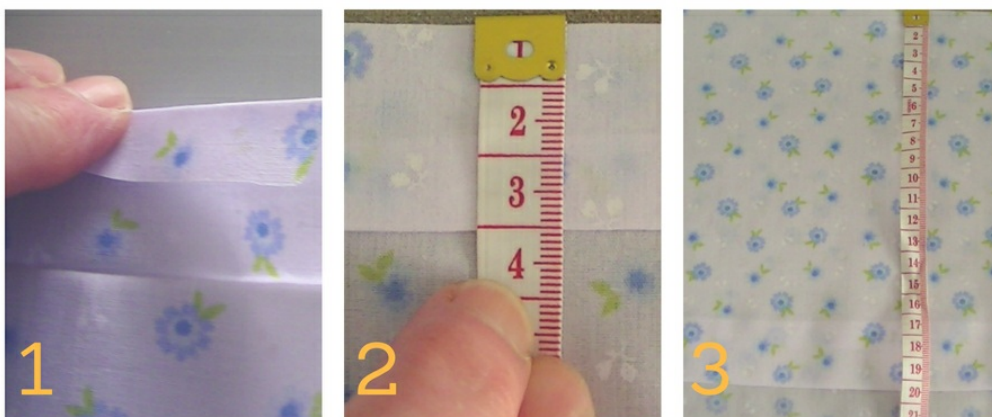
These will be for one pillow case, repeat on the second piece of fabric to create two pillow cases.

### Preparing the pillow case flap

---

- **Step 1:** Taking the main fabric pieces lay right side down and turn one short end over by 1cm and iron flat then turn it over again to create a 3cm fold.
- **Step2:** Using a top stitch (stitch length 3.5 on your sewing machine) sew the 3cm flap flat to make the seam.
- **Step 3:** Once sewn fold this edge over by 19-20cm and iron. This is going to form the pillowcase flap. Pin it flat.

## Preparing the pillow case flap

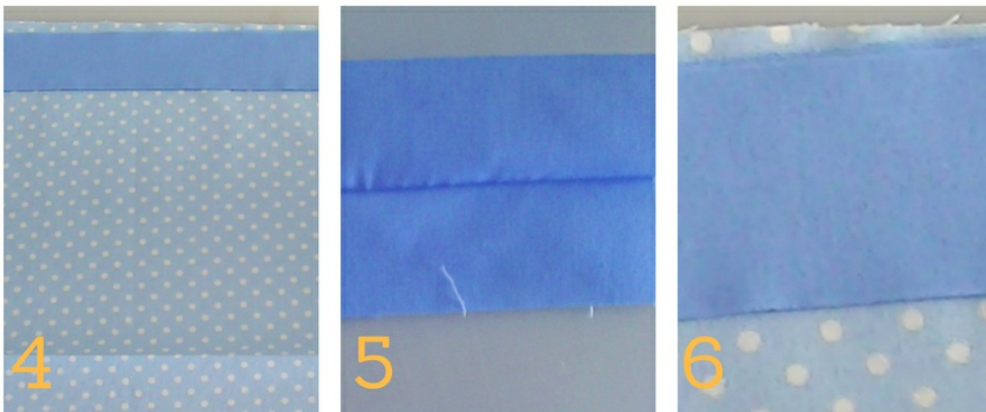


## Adding the contrast colours to the front of the pillow case

*The contrast fabric is going to be sewn so that there are no open raw seams that rub and come loose when sleeping or washing the pillow case. It is important to follow each step to achieve a seamless finish.*

- **Step 4:** Taking the piece of contrast fabric, iron it flat and then fold it in half width ways. It should now be 57cm wide but 17cm long.
- **Step 5:** \* If using the optional fabric open this fabric and iron it flat, then iron it in half width ways. You will have a strip 57cm wide and 3cm long.
- **Step 6:** Open the contrast fabric and lie it flat right side up, lie the \* optional fabric on the top, do not open it use it as a strip.

## Adding the contrast colours - front of the pillow case



## Adding the contrast colours - front of the pillow case



- **Step 7:** Roll the main piece of fabric into a roll starting from the pinned flap end, it should take up less space than half the contrast fabric (see image). Lie the fabric right side down and pin to hold all the above pieces together.
- **Step 8:** Take the other raw edge of the contrast colour and bring it over the rolled fabric and place it right side facing onto the layers already pinned. Pin again removing bottom (first pinned) pins, You should now have a fabric roll all layers incorporated in the contrast fabric. Sew this seam 10mm normal straight stitch.

## Adding the contrast colours - front of the pillow case





**Step 9:** Pull the rolled fabric out from the middle of the fabric and then press the contrast fabrics which you have now attached to the main piece flat and top stitch to encase the inner stitching and also to keep the \* contrast from sticking up when you sleep.

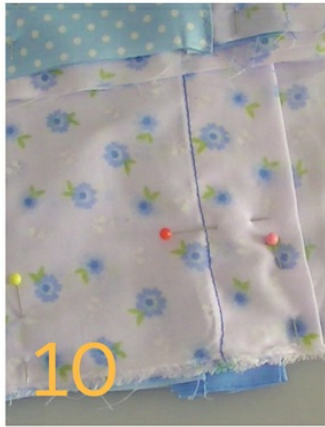
## Adding the contrast colours - front of the pillow case



### Finishing off your pillow case with inner encased seams.

- **Step 10:** Fold the bottom fold end wrong side to wrong side with the top end. (The right side of the pillow case should be on the outside, wrong side on the inside.) Keeping the fabric level and even at the top. Iron and pin down the side seam to keep in place
- **Step 11:** Starting each seam at the top of the contrast ( this gives a good finish on the top and as the bottom bit is a fold you get no overlap if the fabric moves slightly when you sew) Sew the side seam with a straight stitch using a 15mm seam. Once sewn trim the side seams down to 5mm.

## Finishing off your pillow case with inner encased seams.




- **Step 12:** Turn the pillow case inside out so the right side is now on the inside and the wrong side is on the outside, press nice and flat and then sew the seams again, this time 10mm encasing the raw edge of the 5mm seam you previously made.
- **Step 13:** Turn the pillow slip right side out, you should now have a pillow case with all seams encased.
- **Repeat for the second pillow case.**

## Finishing off your pillow case with inner encased seams.



That's it, easy and great as Christmas and house warming gifts!!!

Check out some of the other sewing tutorials on this BLOG!!



SO EASY TO SEW


# Wash Bag

Step By Step Instructions - Beginner

[learn-to-sew.co.uk](http://learn-to-sew.co.uk)

SEW EASY - WASH OR  
COSMETIC BAG

MAKE A LOVELY WASH BAG – TUTORIAL



SO EASY TO SEW

# Duffle Bag

Step By Step Instructions - Beginner

[learn-to-sew.co.uk](http://learn-to-sew.co.uk)

SEW EASY - SOFT BOX  
DUFFLE BAG

SEW A DUFFLE BAG – TUTORIAL