

Sun or Rain Hat – Make this easy reversible floppy hat for the family.

learn-to-sew.co.uk/sun-or-rain-hat/

July 24, 2018



Everyone needs a sun hat and everyone needs a rain hat so why not make this reversible hat that does both.

This is a wonderfully easy project. Make them for the kids, make them for yourself but best of all make them for the men in your life. You can use waterproof camouflaue fabric for the fishermen or birdwatchers, suiting for the older refined gent. Better than socks for Christmas. :)

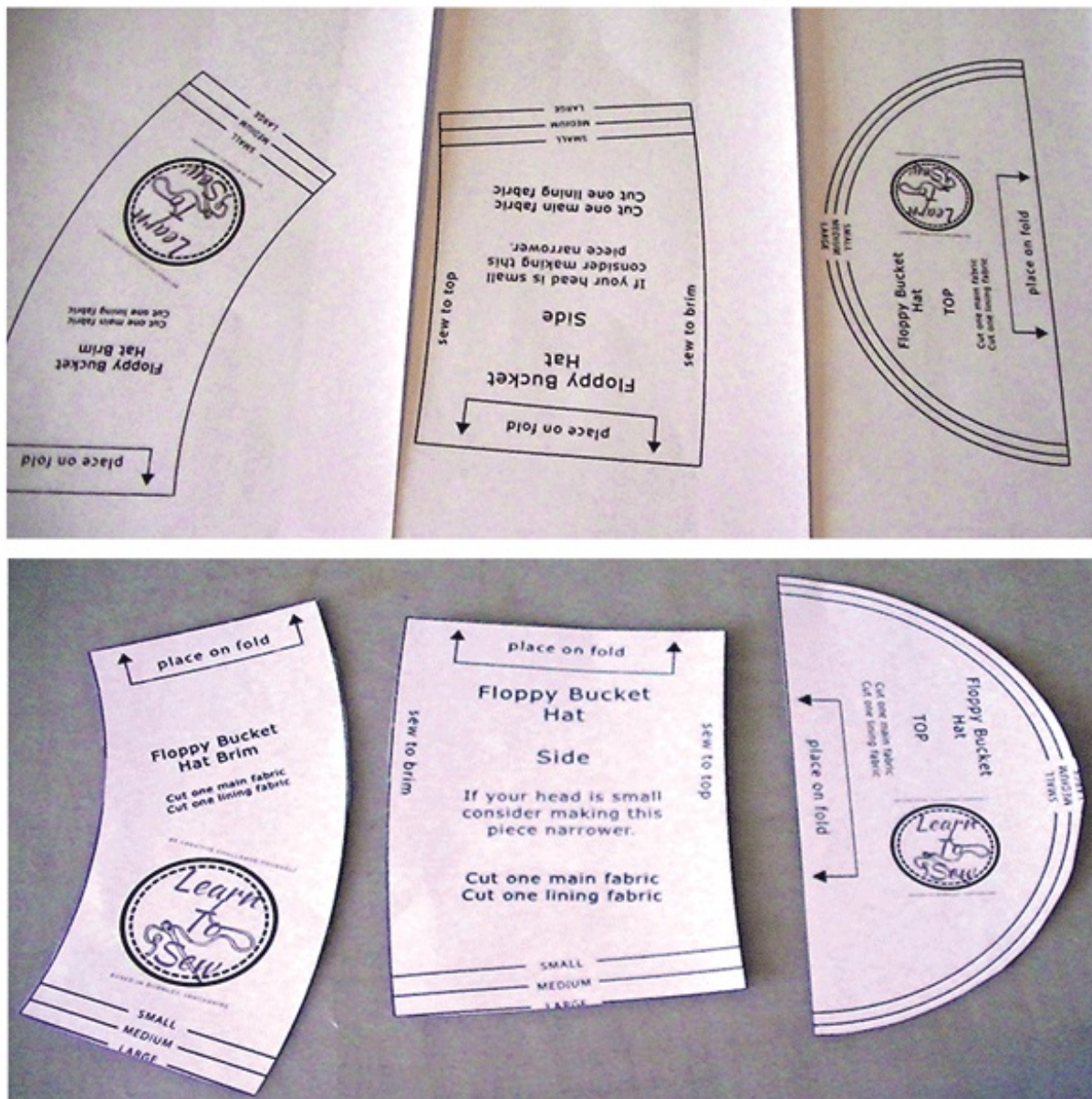
- Available in 3 sizes, so measure the head it needs to fit before you start.

- If you do not have a tall head, (the distance from where you have to measure from the middle of your ear to the top of your crown) you may want to decrease the middle bit by 10mm before you sew. Similarly, if you have a high head you may want to add a bit. You can check this measurement once you have sewn the top to the middle band.
- Measure the circumference of your head using a flexible tape measure. Choose your size: small: 54.5cm, medium: 57cm, large: 59.5cm.
- You can make a larger hat if you need to. Look at the pattern and increase in the places where you notice the increased lines go for larger sizes. Each increment results in a 2.5cm increase in head size.

Material needed to make this sun rain hat

I used up some fabric scraps but you can buy fabric just for the hat if you wish.

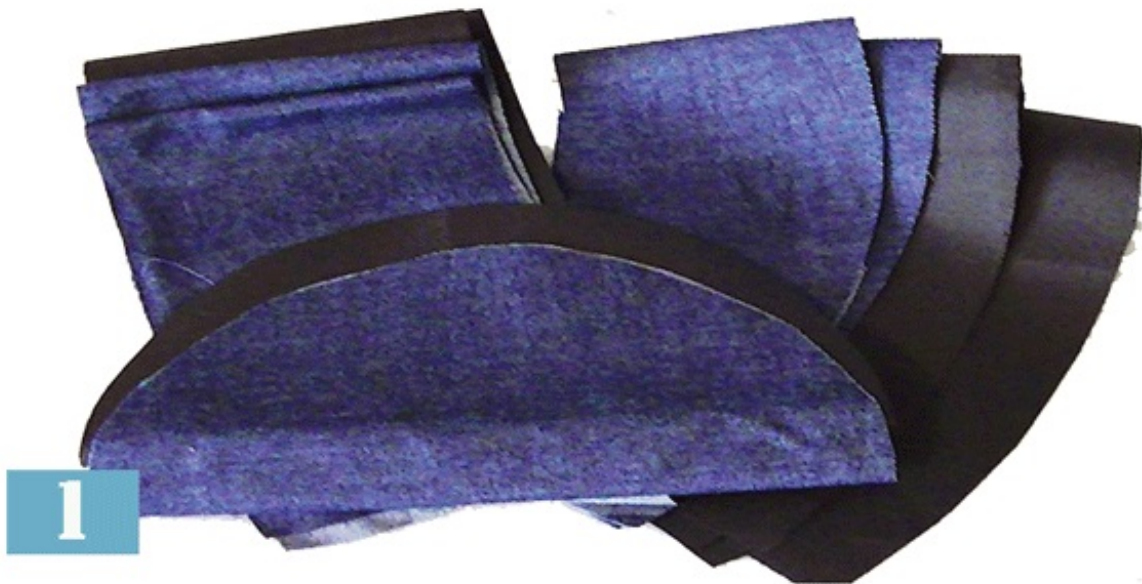
- 0.5m water resistant fabric for the main side.
- 0.5m cotton or denim fabric for the lining inner side.
- Sewing machine needle for sewing waterproof fabrics 70/11, preferably a brand new sharp needle.
- Sewing machine and thread.
- Sharp scissors.
- Iron and ironing board.
- Pins.
- Pattern downloaded
- Printer and A4 paper - Print the pattern out onto paper. Make sure your page size is set to 100% when you print it out, or the size would be wrong. Check you have printed the pattern out at 100% and cut the pieces out. [CLICK HERE IF YOU DO NOT KNOW HOW TO PRINT A .PDF PATTERN](#)



First Steps To Putting it all Together

Step 1: Cut out your fabric pieces. One rounded top piece for both main and lining, cut two side pieces on a fold for both main and lining fabrics, two brim pieces for both the main fabric and the inner lining.

Step 2: With right sides of main fabric together, stitch brim pieces together with 1.5cm (15mm) wide seam allowances. (repeat all these steps with the lining fabric as well so you have two basic hat shells at the end) Iron the seams open and flat.



Next pin and sew

Step 3: Place the brim pieces right side to right side and pin. (repeat with lining fabric)

Step 4: Sew the side pieces together with a straight stitch length 2.5 to 3. you don't need to over lock or zig zag the edges. Use the same stitch to sew the brim sections together. (repeat with lining fabric).

You should now have a circle top for each hat, a circle of side fabric and a shorter circle of brim fabric for the main fabric hat and the lining hat.



3



4

Start putting the hat together

Step 5: Pin the smaller edge of the side piece to the round top piece. I folded the top in half and pinned the seams of the side pieces on either side of this half way mark. This made it easy and even to fit the side to the top. (repeat with the lining)

Step 6: Sew the pieces together with a 10mm seam.

5



6



Top stitch and strengthen

Step 7: Hand press the seams you have just sewn towards the side seam. Select a different colour thread or use matching thread, top stitch using stitch length 3 to secure the top and side seam. Once done try the bit you have completed on. Note how far it hangs over your face, this is where you can make adjustments so that the hat doesn't obscure vision. (repeat with lining)

- To make it shorter either trim a bit off evenly around the side piece and make a note on your pattern to adjust next time.
- If the side is only fractionally too long sew the brim to side piece using a 15mm/20mm seam. This makes a nice even finish.

Step 8: Pin the smaller side of the brim to the side edge. Sew together using 10mm seam unless making the above adjustment.

7



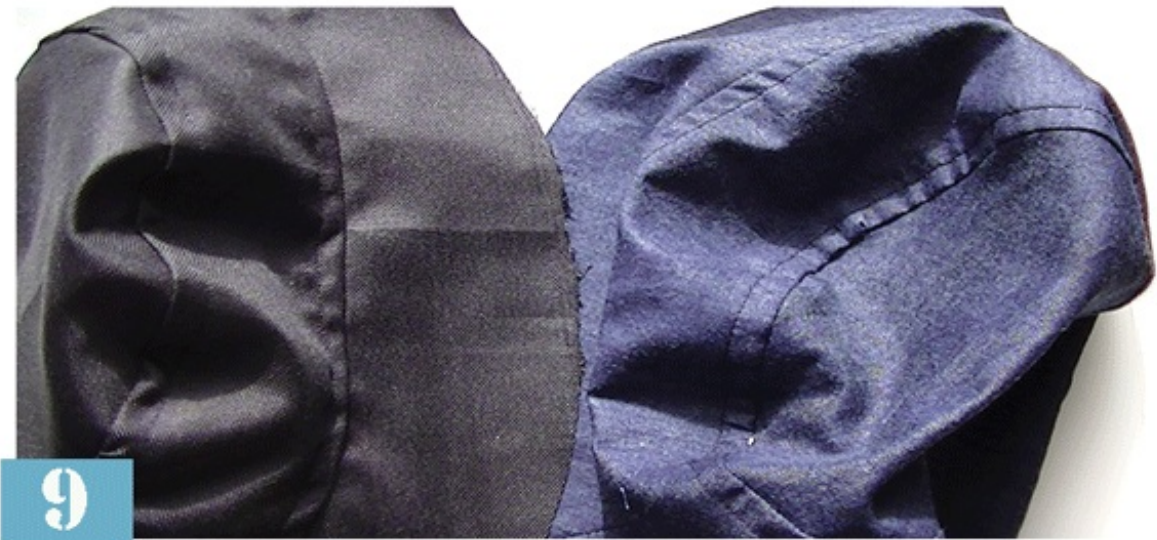
8



Securing and putting pieces together

Step 9: Finger press the seam from the brim and side towards the side seam. Top stitch this seam using stitch length 3 as before choose thread colour.

Step 10: Place the main hat piece into the lining piece with right side facing. Right sides (inside) wrong sides (outside).



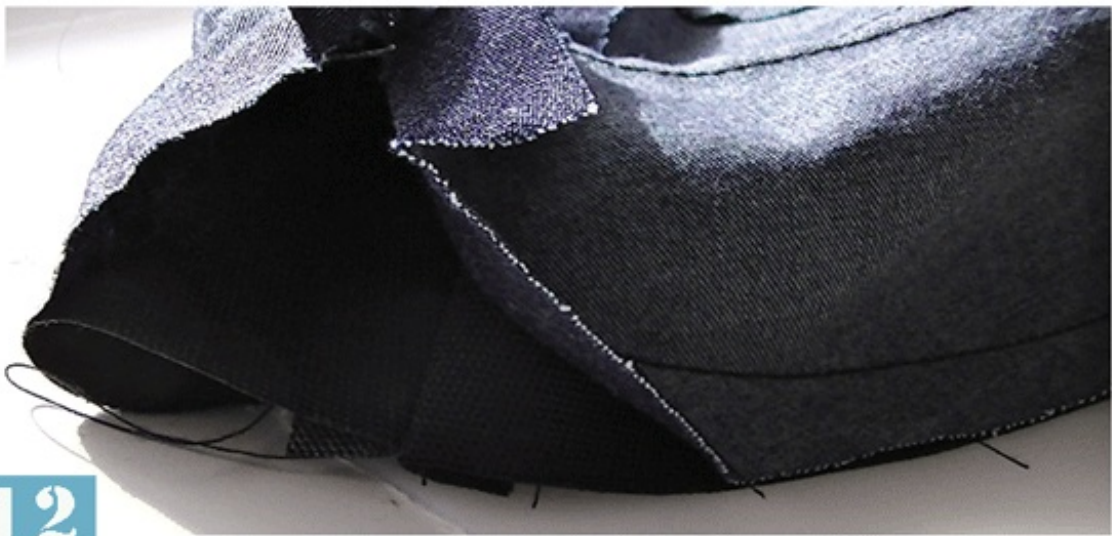
Sewing the pieces together

Step 11: Stitch around the brim edge. Leave a section un sewn so that you can turn the hat inside out.

Step 12: Pull the inside hat out through the hole left open. Finger press the hats so that they fit into each other nicely. Slip stitch the seam on the edge closed.



11



12

Finishing off the hat

Final step: Top stitch using stitch length 3 and chosen thread colour, rows of stitches around the brim piece. This secures the two hat pieces together and allows the hat to be reverseable.

See picture - waterproof hat one side and denim lining hat the other...

How wonderful!!!



13

SO EASY TO SEW

Alice Band

Step By Step Instructions - Beginner

learn-to-sew.co.uk

SEW EASY - ALICE BAND



learn-to-sew.co.uk

SEW EASY PILLOWCASES WITH IN